



GRADE YOUR LMS

JULY 2021

A recent survey found a surprising percentage of educators in K-12 not satisfied or unsure about their district's official Learning Management System (LMS)—the mission-critical system for classroom management, group collaboration, student assessments, reporting and more.



TABLE OF CONTENTS

EXECUTIVE SUMMARY	2
GRADE YOUR LMS: POLL HIGHLIGHTS	3
LMS OF RECORD	3
ATTENDANCE	3
CLASSROOM MANAGEMENT	5
COURSE CONTENT	6
ASSESSMENT	7
REPORTING.....	8
PARENT ENGAGEMENT.....	9
GROUP COLLABORATION	10
OVERALL LMS SATISFACTION	11
METHODOLOGY	11
ABOUT EDSBY	11
ABOUT C. BLOHM & ASSOCIATES, INC.	11

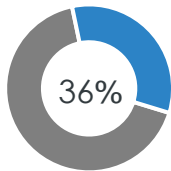
EXECUTIVE SUMMARY

Poll finds dissatisfaction with leading LMSes in K-12

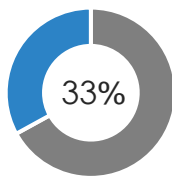
Conventional Learning Management Systems are not fully meeting the expectations of today's educators

Educators in K-12 increasingly rely on their district's Learning Management System (LMS) to support a variety of mission-critical tasks, including classroom management, group collaboration, student assessments and reporting. In 2020, the pandemic forced an abrupt transition to full-time distance learning and an urgent necessity for digital solutions on which to conduct learning.

While school systems scrambled to adopt and scale LMSes, a poll we conducted in May 2021 sought to better understand educators' opinions about how well their current platforms serve them. Satisfaction ratings indicate that educators **expect more** from their LMSes. Poll respondents named Canvas, Schoology, Google Classroom, Desire2Learn, and Blackboard, among others, as conventional LMSes that aren't fully meeting their needs.



While 85 % of respondents reported their district has a single, official LMS, more than one-third (36%) said they're unsatisfied or unsure about how well their current platform meets their needs



No single capability of conventional K-12 LMSes received a "most satisfied" rating above 33% among poll respondents, who were asked to grade the capabilities of their LMSes in seven areas

Meanwhile, users of the **Edsby LMS for K-12** rated their experience above the satisfaction rating of other LMSes across virtually all dimensions.

Read on to learn which LMS features did and didn't make the grade.

GRADE YOUR LMS: POLL HIGHLIGHTS

In our Grade Your LMS poll, respondents were asked to rate their institution's LMS on seven key features. They rated each on a scale of 1-5, with 1 being the least satisfied, and 5 being the most.

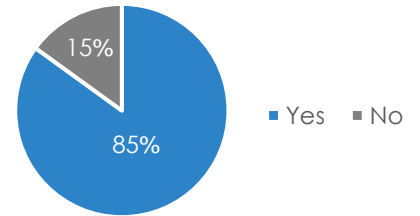


Here are the results:

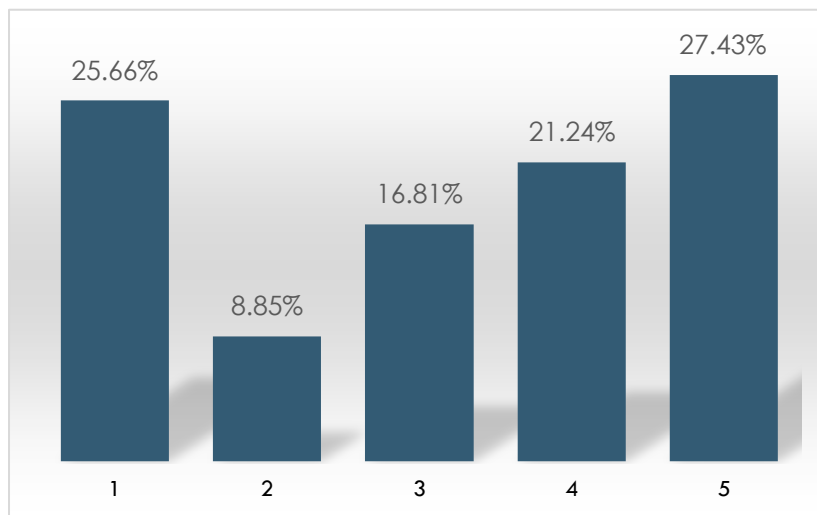
LMS OF RECORD

We asked, "Does your school have a single, official Learning Management System (LMS) that every teacher is supposed to use"?

- While the pandemic forced an abrupt transition to distance learning, 15% of 173 respondents report that their district still does not have a single, official LMS.



ATTENDANCE



1	2	3	4	5	TOTAL	WEIGHTED AVERAGE
25.66%	8.85%	16.81%	21.24%	27.43%		
29	10	19	24	21	113	3.16

Findings indicate that conventional LMSes have set a low bar for what is included in the LMS feature set, Attendance was not appreciated as a hallmark feature, as most LMSes either don't have attendance features or have only rudimentary capabilities.

26%

Of respondents said they are very dissatisfied with the attendance capabilities of their LMS.

83%

Of **Edsby** users said they are satisfied with its attendance capabilities.

- Your turn! Grade your own LMS' attendance capabilities:
 - Can you perform attendance directly within the LMS? If not, can you sync attendance from a Student Information System (SIS) and see it in the LMS?
 - Is there an option to mark and manage students' late and absent days? Can you share this info with parents?
 - Can attendance be taken on mobile devices?

Unsurprisingly, the majority respondents indicated that they're **satisfied or most satisfied** with core features of LMSes:



CLASSROOM MANAGEMENT

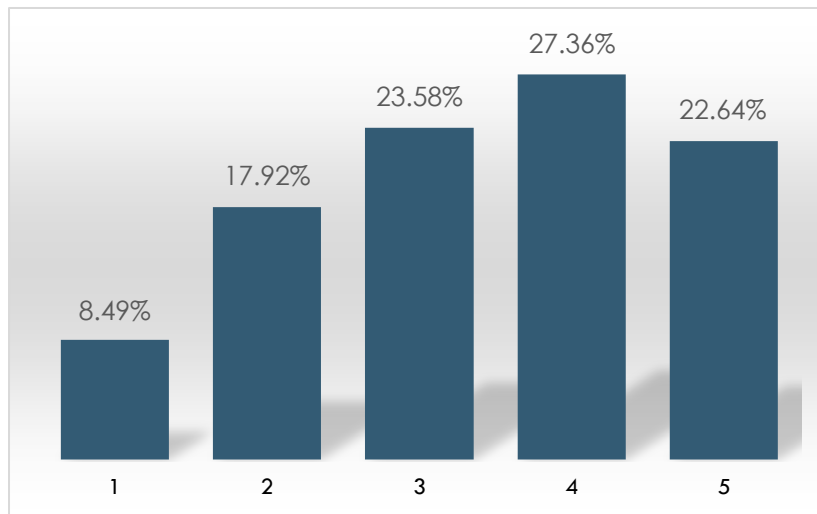


COURSE CONTENT



ASSESSMENT

CLASSROOM MANAGEMENT



1	2	3	4	5	TOTAL	WEIGHTED AVERAGE
8.49%	17.92%	23.58%	27.36%	22.64%		
9	19	25	29	24	106	3.38

50%

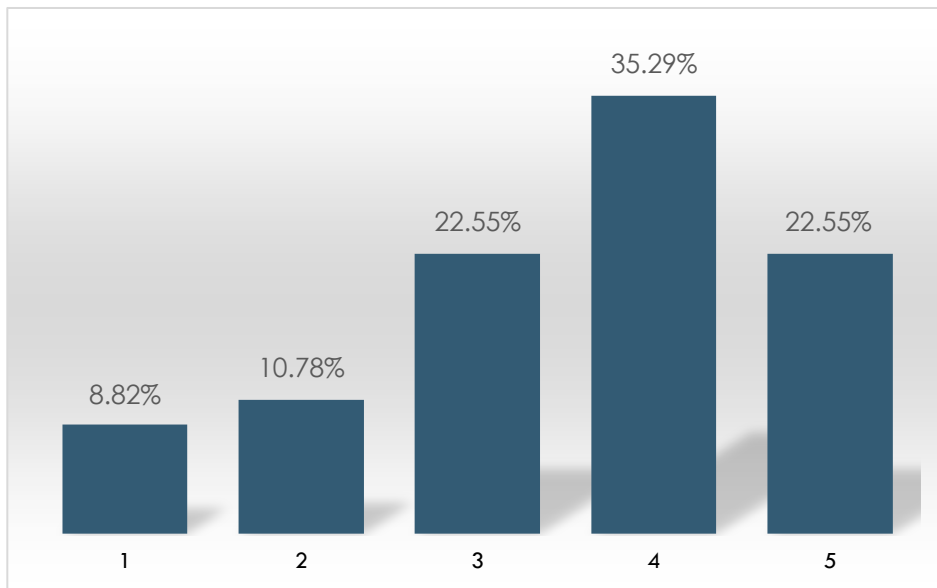
Of respondents said they are satisfied or most satisfied with the classroom management capabilities of their LMS.

62%

Of **Edsby** users are satisfied or most satisfied with its classroom management capabilities.

- Your turn! Grade your own LMS' classroom management capabilities:
 - Is there automatic creation of classes and students?
 - Can class rosters and seating plans be printed?
 - Are you able to facilitate live video conferencing, whiteboarding and chat?

COURSE CONTENT



1	2	3	4	5	TOTAL	WEIGHTED AVERAGE
8.82%	10.78%	22.55%	35.29%	22.55%		
9	11	23	36	23	102	3.52

58%

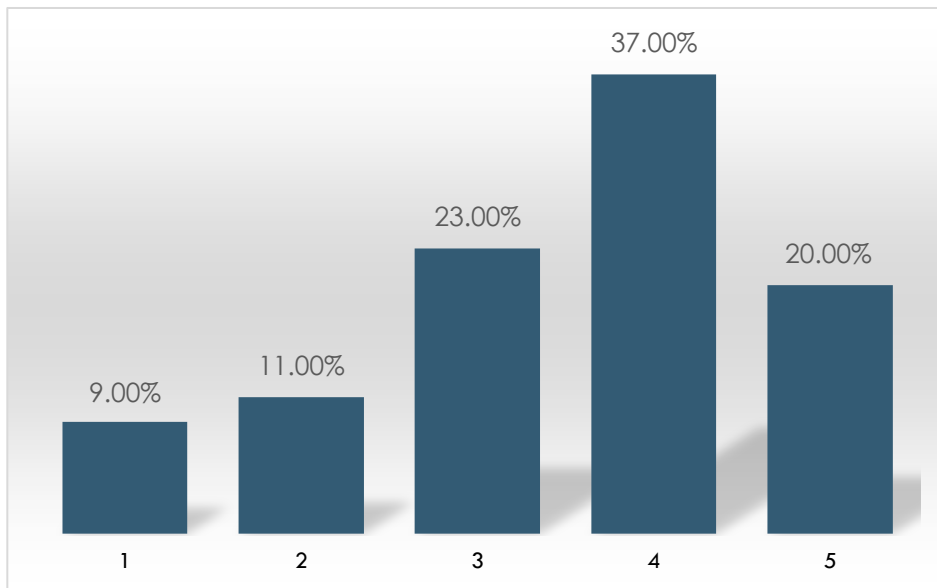
Of LMS users said they are satisfied or most satisfied with the course content of their LMS.

56%

Of **Edsby** users rated their LMS' course content capabilities essentially on par.

- Your turn! Grade your own LMS' course content capabilities:
 - Can you author and/or import content with multimedia?
 - Are there centrally managed course models that can be reused?
 - Is there an audit trail of changes to course content?

ASSESSMENT



1	2	3	4	5	TOTAL	WEIGHTED AVERAGE
9.00%	11.00%	23.00%	37.00%	20.00%		
9	11	23	37	20	100	3.48

57%

Of respondents are satisfied or most satisfied with the assessment capabilities of their LMS.

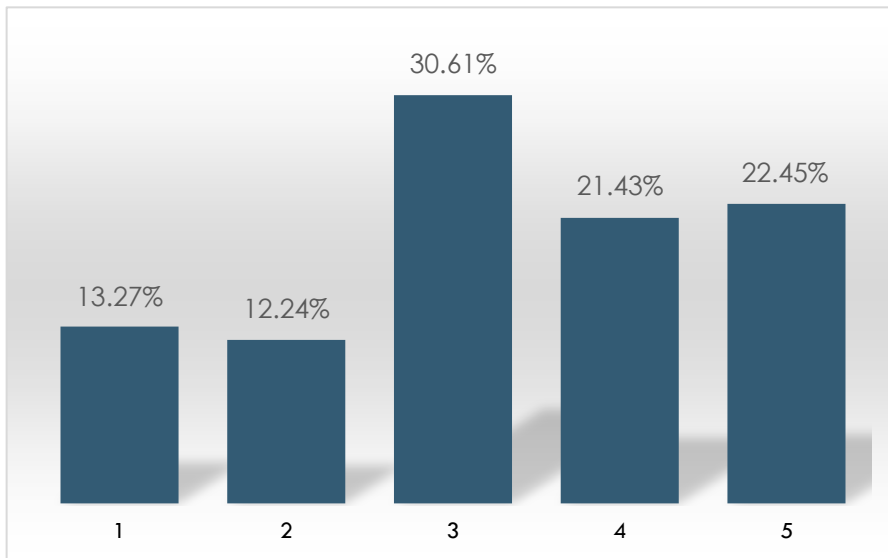
57%

Of **Edsby** users gave its assessment capabilities a "4" or "5".

- Your turn! Grade your own LMS' assessment capabilities:
 - Can you create, customize and grade tests in multiple formats?
 - Is there build-in support for assessment schemes, including rubrics, strands or EGSN?
 - Are you able to capture and tag evidence of learning through formative artifacts (e.g., audio, video)?

REPORTING

While the vast majority of respondents are satisfied or most satisfied with the classroom management, course content and assessment features of their LMS, responses indicate that the reporting feature of conventional LMSes fall short. Edsby gets higher marks given its report card submission workflow, comment bank and even the ability to print official district report cards.



1	2	3	4	5	TOTAL	WEIGHTED AVERAGE
13.27%	12.24%	30.61%	21.43%	22.45%		
13	12	30	21	22	98	3.28

56%

Of respondents feel neutral about or are unsatisfied with the reporting capabilities of their LMS.

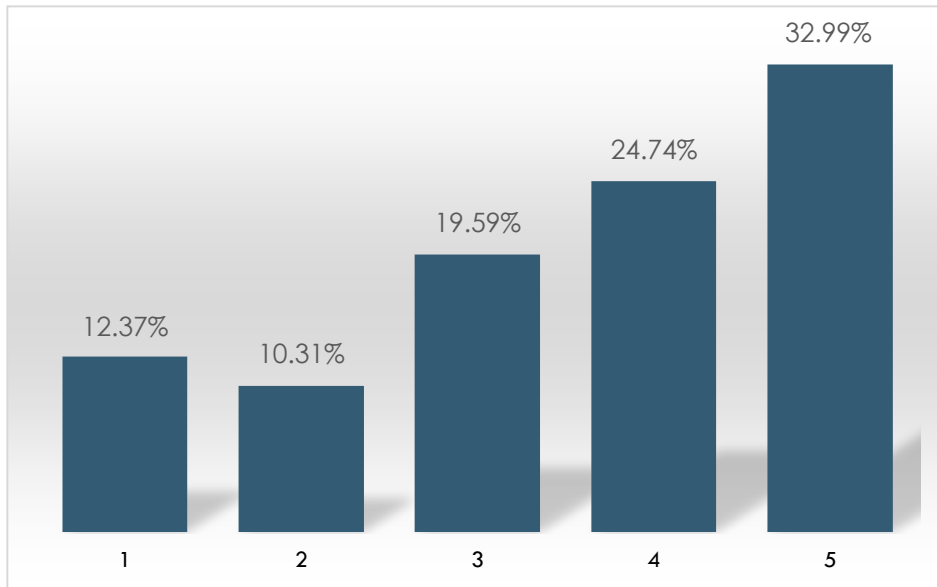
67%

Of **Edsby** users are satisfied or most satisfied with its reporting capabilities.

- Your turn! Grade your own LMS' classroom management capabilities:
 - Can you compare reports to standards or expectations?
 - Is there a way to share learning artifacts with parents? If so, can they be shared in real time?
 - Is there a report card workflow? Can you electronically publish or print report cards directly from the LMS?

PARENT ENGAGEMENT

Of all capabilities, parent engagement received the highest “most satisfied” rating. It’s a true bright spot for LMSes during a period when parents and guardians became more intimately involved in their students’ coursework.



1	2	3	4	5	TOTAL	WEIGHTED AVERAGE
12.37%	10.31%	19.59%	24.74%	32.99%		
12	10	19	24	32	97	3.56

58%

Of respondents are satisfied or most satisfied
One-third are most satisfied with the parent engagement features of their LMS.

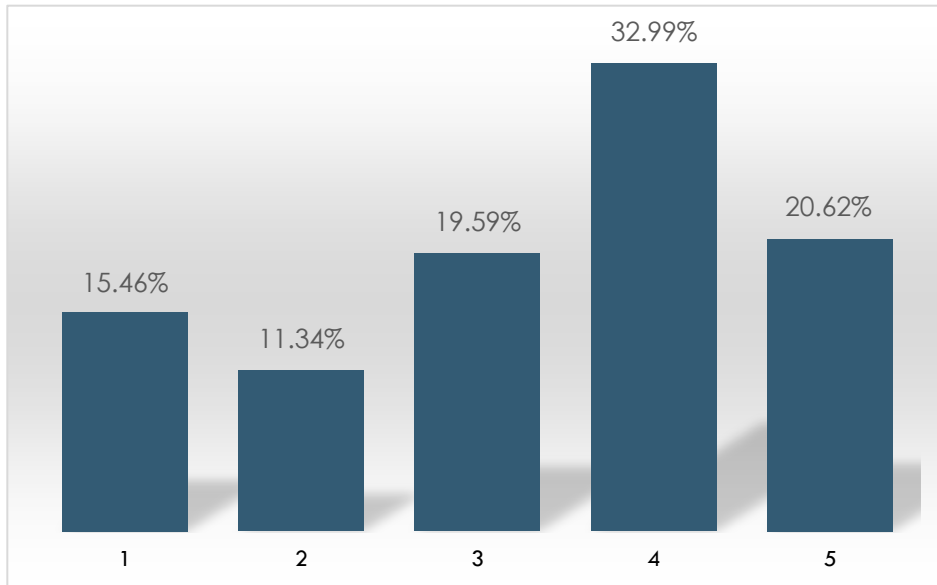
75%

Of **Edsby** users are satisfied or most satisfied with its parent engagement capabilities.

- Your turn! Grade your own LMS' parent engagement capabilities:
 - Do parents and guardians have their own login? Can they access the LMS 24/7?
 - Is there a single login option for all students?
 - Can parents and guardians receive instant grade or attendance alerts?

GROUP COLLABORATION

An emerging feature among conventional LMSes, Edsby users have enjoyed and heavily used the platform for its group collaboration functionalities.



1	2	3	4	5	TOTAL	WEIGHTED AVERAGE
15.46%	11.34%	19.59%	32.99%	20.62%		
15	11	19	32	20	97	3.32

54%

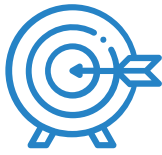
Of educators are satisfied or most satisfied with the group collaboration capabilities of their LMS.

75%

Of **Edsby** users gave a rating of "4" or above in this category.

- Your turn! Grade your own LMS' group collaboration capabilities:
 - Are there collaborative areas for special interests, teams and clubs? Can these be viewed at the school and district level?
 - Are there mandatory staff moderators? How about areas and tools for teacher training and PD?
 - Is there an option to auto-assign users to groups based on their role, grade etc.?

OVERALL LMS SATISFACTION



Some **64%** of respondents said they are satisfied with their current LMS



Yet, more than one-third (**36%**) of respondents said are either not satisfied (**22%**) or unsure (**14%**) about their LMS



Meanwhile, **85%** of Edsby users said they are satisfied with the platform

How does your own LMS compare? Are you satisfied? Is there room for improvement? See what a purpose-built LMS for K-12 education looks like: [Click here](#) to learn more about Edsby.

METHODOLOGY

This report is based on a survey of 173 K-12 education professionals, including administrators, technology directors, principals and teachers, conducted in May 2021. To collect these responses, C. Blohm & Associates (CB&A) and Edsby deployed an email to school districts and via email through a partnership with the Consortium for School Networking (CoSN.) Respondents were asked to grade their Learning Management System (LMS) based on seven key capabilities, with 1 being least satisfied and 5 being most satisfied.

ABOUT EDSBY

Edsby is a next generation K-12 Learning management system (LMS) with the broadest set of capabilities available in a single application made just for the specific needs of K-12. It goes beyond other LMSes, enabling improved teaching effectiveness and student success in and out of the classroom. Edsby features modern assessment and reporting, timesaving tools for teachers, analytics and more for the full spectrum of K-6 and 7-12 within a familiar, social-style user experience. Edsby has received more than 60 industry awards and distinctions. More information at <https://edsby.com/>.

ABOUT C. BLOHM & ASSOCIATES, INC.

CB&A is the most experienced marketing communications agency specializing in the U.S. education market. CB&A accelerates the growth of companies that provide products and services to K-12 school systems and higher education institutions. More information at <https://cblohm.com/>.